



The heart of
your water system

Date:	June 1, 2006
Section: 15	Page: 1
Cancel & replace:	01-04-99

Piston pump repair kits

INCLUDES:

- ? Leather cups
- ? Gaskets
- ? Rubber valves
- ? Springs, washers and cutter pins kit
- ? Packing kits



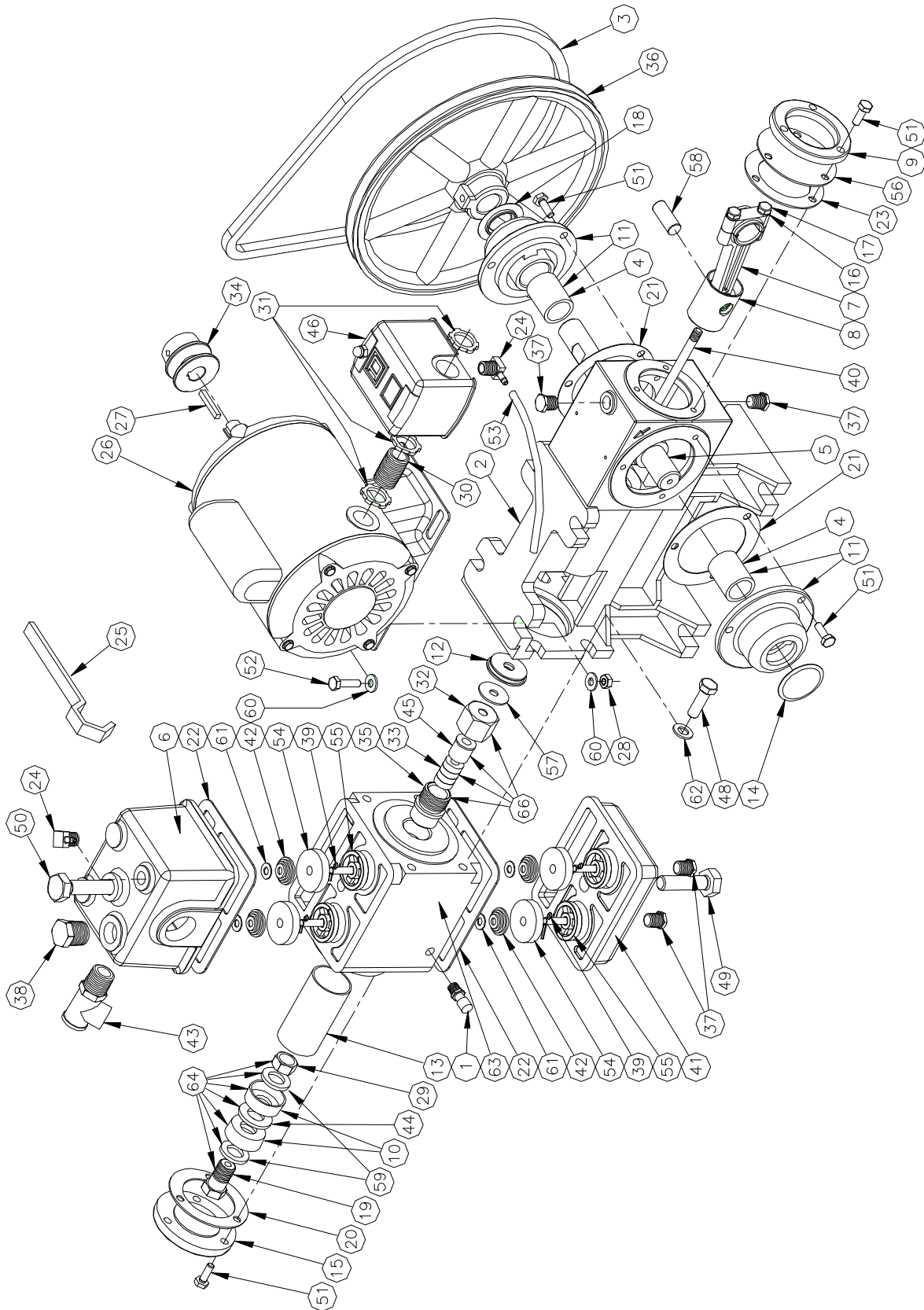
Part number	Model	Suggested list price	Part number	Model	Suggested list price
522-2801	Pompcoco S-275	19.50*	523-0033	McDougall 1407	43.20*
522-2802	Pompcoco S-450	21.60*	523-0040	GSW 3007 1 1/4"	25.00*
522-2803	Pompcoco S-600	22.60*	523-0041	GSW 3007 1 1/2"	27.50*
522-2811	Pompcoco S-275 syrup (C.I.)	47.30*	523-0050	Beaumont B-3	31.80*
522-2812	Pompcoco S-450 syrup (C.I.)	49.40*	523-0055	Homart / Sears C-90 - 1 1/8"	42.50*
522-2813	Pompcoco S-600 syrup (C.I.)	53.00*	523-0056	Homart / Sears C-259 - 1 1/4"	42.50*
522-2850	Pompcoco S-275 syrup (S/S)	47.00*	523-0060	Otaco	32.00*
522-2852	Pompcoco S-600 syrup (S/S)	52.00*	523-0065	Royal R-4	30.00*
523-0001	Beatty 300	25.50*	523-0070	Homart / Sears C-390 - 1 3/8"	40.00*
523-0002	Beatty 301	46.80*	523-0101	Duro K-255 / B-251	19.70*
523-0003	Beatty 1475-1775	33.30*	523-0102	Duro K-365	23.00*
523-0004	Beatty 1495-1795	48.50*	523-0103	Duro E-250	26.50*
523-0010	Fairbank-Morse 200	40.00*	523-0104	Duro E-360	26.50*
523-0011	Fairbank-Morse 250	40.00*	523-0105	Duro E-500	37.50*
523-0012	Fairbank-Morse 425	32.50*	523-0106	Duro E-720	39.20*
523-0013	Fairbank-Morse 625	56.30*	523-0500	Southern S-250 / Teco	19.70*
523-0020	National 25	36.00*	523-0501	Southern S-425	25.20*
523-0021	National 100	32.50*	523-0502	Southern S-575	27.50*
523-0022	National 101	33.70*	523-0505	Southern P-265	25.20*
523-0030	McDougall 7502	36.00*	523-0506	Southern P-275	25.70*
523-0031	McDougall 7503	36.00*	523-0507	Southern P-450	30.00*
523-0032	McDougall 1406	43.20*	523-0508	Southern P-600	36.50*



The heart of
your water system



Date:	June 1, 2006
Section: 15	Page: 2
Cancel & replace:	01-04-99





The heart of
your water system

Date: June 1, 2006

Section: 15 Page: 3

Cancel & replace: 01-04-99

REPLACEMENT PARTS PISTON PUMP

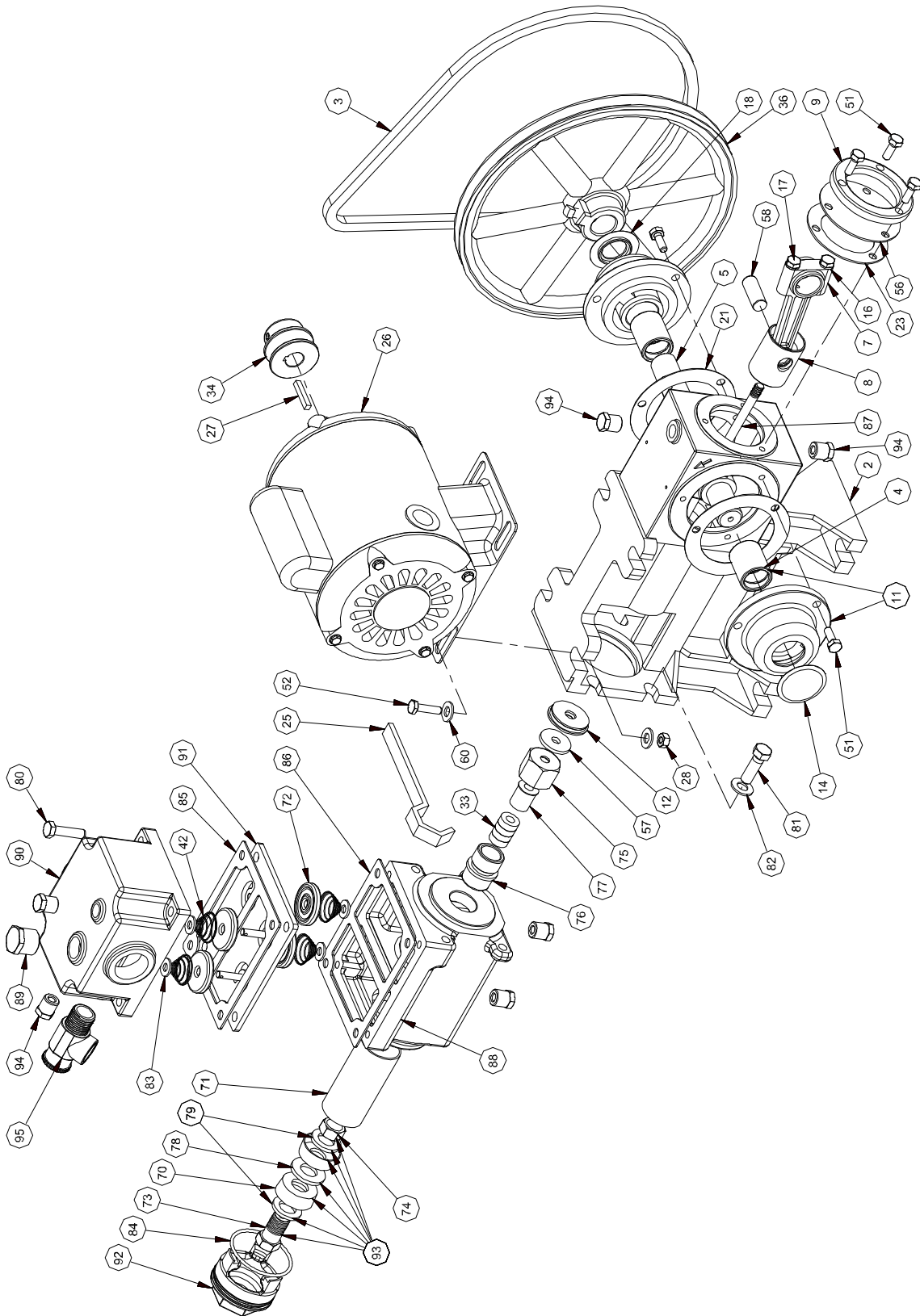
#	Part number	DESCRIPTION	Price list	#	Part number	DESCRIPTION	Price list
1	023-0060	SN-18L SNIFFER VALVE	4.00	35	522-3506	PACKING BOX	15.00
2	522-0300	PUMP BODY	119.00	36	522-3509	10" PUMP PULLEY - 7/8" BORE	60.00
3	522-0301	V-BELT (4L-360)	5.70	37	522-3510	1/4" NPT BRASS PLUG	0.90
4	522-0302	CRANKSHAFT BUSHING	10.50	38	522-3511	1/2" NPT BRASS PLUG	3.10
5	522-0800	CRANKSHAFT	52.00	39	522-3512	BRASS CUTTER PIN	0.30
6	522-0801	AIR CHAMBER	61.00	40	522-4000	PISTON ROD	7.00
7	522-0803	BRASS CONNECTING ROD ASSEMBLY	62.70	41	522-4200	SUCTION CHAMBER (ITEM 41-55)	63.70
8	522-0804	PISTON HEAD	19.40	42	522-4201	SPRING VALVE	0.70
9	522-0805	CRANKCASE COVER	9.00	43	711-0030	RV-50 / 100 PSI RELIEF VALVE	9.30*
10	522-0806	(1 3/8") S-275 LEATHER CUP	3.60	44	522-4206	S-275 PISTON SPACER	4.00
10	522-0807	(1 3/4") S-450 LEATHER CUP	5.00	44	522-4207	S-450 PISTON SPACER	6.00
10	522-0808	(1 7/8") S-600 LEATHER CUP	5.30	44	522-4208	S-600 PISTON SPACER	6.00
11	522-0809	CRANKSHAFT BEARING ASSEMBLY (ITEM	45.00	45	522-4210	PACKING BOX SLEEVE	5.30
12	522-0812	PISTON ROD GUIDE	8.10	46	661-0150	FSG-2P / 30-50 PRESSURE SWITCH	31.00*
13	522-0815	S-275 YELLOW BRASS CYLINDER	14.60	48	522-4215	3/8-16 x 1 1/2" HEXAGONAL BOLT (PLATED)	0.60
13	522-0816	S-450 YELLOW BRASS CYLINDER	32.00	49	522-4216	1/2 x 2" HEXAGONAL BOLT (PLATED)	0.90
13	522-0817	S-600 YELLOW BRASS CYLINDER	18.00	50	522-4217	1/2 x 4" HEXAGONAL BOLT (PLATED)	1.60
14	522-0818	CRANKSHAFT BEARING PLUG (CLOSE)	1.20	51	522-4218	1/4-20 x 3/4" HEXAGONAL BOLT (PLATED)	0.20
15	522-0819	WATER BOX HEAD COVER	18.60	52	522-4219	1/4-20 x 1" HEXAGONAL BOLT (PLATED)	0.20
16	522-0826	1/4" LOCK WASHER (BLACK)	0.20	53	242-0500	MV-4040 POLYETHYLENE TUBING	0.40
17	522-0827	1/4-20 x 1 1/2" HEXAGONAL BOLT (BLACK)	0.50	54	522-5100	NEOPRENE VALVE DISC	1.40
18	522-0828	CRANKSHAFT BEARING PLUG (OPEN)	3.20	55	522-5101	SEAT VALVE SUCTION CHAMBER	10.00
19	522-2001	PISTON ADJUSTING BOLT	9.60	55	522-5102	SEAT VALVE AIR CHAMBER	10.00
20	522-2200	WATER BOX HEAD COVER GASKET	1.30	56	522-5105	WINDOW	4.00
21	522-2202	CRANKSHAFT BEARING GASKET	1.30	57	522-5303	ROD WIPER	0.70
22	522-2203	WATER BOX GASKET	2.10	58	522-5305	HEAD PISTON PIN	8.00
23	522-2205	PUMP BODY GASKET	1.30	59	522-5306	S-275 PISTON WASHER	3.50
24	023-0570	VT-229-4-4 ELBOW	2.90	59	522-5307	S-450 PISTON WASHER	4.90
25	522-2800	PACKING BOX NUT KEY	9.70	59	522-5308	S-600 PISTON WASHER	5.50
26	522-3000	1/3 HP MOTOR WITH CAPACITOR (S-275,S-	240.00*	60	522-5311	1/4" WASHER (PLATED)	0.20
26	522-3001	1/2 HP MOTOR WITH CAPACITOR (S-600)	323.00*	61	522-5312	1/4" WASHER (BRASS)	0.40
28	522-3101	1/4 x 20 HEXAGONAL NUT (PLATED)	0.20	62	522-5313	5/16" WASHER (PLATED)	0.20
29	522-3102	BRASS PISTON JAM NUT	3.10	63	522-5800	S-275 WATER BOX ASSEMBLY (ITEM 13-55-35-	141.00
30	024-0759	NIPPLE 1/2 x CLOSE (BLACK)	-	63	522-5801	S-450 WATER BOX ASSEMBLY (ITEM 13-55-35-	177.00
31	522-3105	ELECTRIC LOCK NUT 1/2" NPT	0.60	63	522-5802	S-600 WATER BOX ASSEMBLY (ITEM 13-55-35-	172.00
32	522-3501	BRASS PACKING BOX NUT	14.40	64	522-5500	S-275 PISTON CUP ASSY (ITEM 19-59-44-10-29)	35.00
33	522-3502	PACKING KIT (4)	3.10	64	522-5501	S-450 PISTON CUP ASSY (ITEM 19-59-44-10-29)	45.00
34	522-3504	MOTOR PULLEY 1 3/4" O.D. - S-275, S-450	15.00	64	522-5502	S-600 PISTON CUP ASSY (ITEM 19-59-44-10-29)	46.00
34	522-3505	MOTOR PULLEY 2" O.D. - S-600	16.50	66	522-3515	PACKING BOX ASSEMBLY (ITEM 35-33-45-32)	36.00



The heart of
your water system



Date:	June 1, 2006
Section: 15	Page: 4
Cancel & replace:	01-04-99





The heart of
your water system

Date: June 1, 2006

Section: 15 Page: 5

Cancel & replace: 01-04-99

REPLACEMENT PARTS PISTON PUMP - STAINLESS STEEL

#	Part number	DESCRIPTION	Price list	#	Part number	DESCRIPTION	Price list
2	522-0300	PUMP BODY	119.00	70	522-6600	S-600SS NYLON PISTON CUP	17.60
3	522-0301	V-BELT (4L-360)	5.70	71	522-6725	S-275SS S/S CYLINDER	19.90
4	522-0302	CRANKSHAFT BUSHING	10.50	71	522-6750	S-600SS S/S CYLINDER	24.30
5	522-0800	CRANKSHAFT	52.00	72	522-7000	NYLON VALVE	13.50
7	522-0803	BRASS CONNECTING ROD ASSEMBLY	62.70	73	522-7110	S/S PISTON BOLT	14.20
8	522-0804	PISTON HEAD	19.40	74	522-7120	S/S PISTON JAM NUT	8.60
9	522-0805	CRANKCASE COVER	9.00	75	522-7130	S/S PACKING BOX NUT	18.90
11	522-0809	CRANKSHAFT BEARING ASSEMBLY (ITEM 4 -	45.00	76	522-7135	S/S PACKING BOX	19.20
12	522-0812	PISTON ROD GUIDE	8.10	77	522-7150	S/S PACKING BOX SLEEVE	9.90
14	522-0818	CRANKSHAFT BEARING PLUG (CLOSE)	1.20	78	522-7220	S-275SS PISTON SPACER	4.60
16	522-0826	1/4" LOCK WASHER (BLACK)	0.20	78	522-7230	S-600SS PISTON SPACER	6.80
17	522-0827	1/4-20 x 1 1/4" HEXAGONAL BOLT (BLACK)	0.50	79	522-7250	S-275SS PISTON WASHER	4.30
18	522-0828	CRANKSHAFT BEARING PLUG (OPEN)	3.20	79	522-7260	S-600SS PISTON WASHER	6.70
21	522-2202	CRANKSHAFT BEARING GASKET	1.30	80	522-7405	5/16-18 X 1 1/4" HEX BOLT (S/S)	1.60
23	522-2205	PUMP BODY GASKET	1.30	81	522-7410	3/8-16 X 1 1/4" HEX BOLT (S/S)	1.90
25	522-2800	PACKING BOX NUT KEY	9.70	82	522-7415	3/8" S/S WASHER	0.70
26	522-3001	1/2 HP MOTOR (S-275SS)	323.00*	83	522-5312	1/4" S/S WASHER	0.20
26	522-3003	3/4 HP MOTOR (S-275SS)	352.00*	84	522-7450	O'RING	0.90
28	522-3101	1/4 x 20 HEXAGONAL NUT (PLATED)	0.20	85	522-7470	AIR CHAMBER GASKET	3.60
33	522-3502	PACKING KIT (4)	3.00	86	522-7475	SUCTION GASKET	3.60
34	522-3504	MOTOR PULLEY 1 3/4" O.D.	15.00	87	522-7600	S/S PISTON PUMP ROD	8.90
36	522-3509	10" PUMP PULLEY - 7/8" BORE	60.00	88	522-8000	S/S WATER BOX	184.00
42	522-4201	SPRING VALVE	0.70	89	522-8010	1/2" NPT S/S PLUG	8.90
51	522-4218	1/4-20 x 3/4" HEXAGONAL BOLT (PLATED)	0.20	90	522-8030	S/S AIR CHAMBER	119.00
52	522-4219	1/4-20 x 1" HEXAGONAL BOLT (PLATED)	0.20	91	522-8052	S/S SEAT PLATE ASS'Y	98.00
56	522-5105	WINDOW	4.00	92	522-8100	S/S PISTON PLUG	26.30
57	522-5303	ROD WIPER	0.70	93	522-8200	S-275SS ASSY PISTON	54.00
58	522-5305	HEAD PISTON PIN	8.00	93	522-8202	S-600SS ASSY PISTON	63.00
60	522-5311	1/4" WASHER (PLATED)	0.20	94	550-0065	1/4" NPT S/S PLUG	6.50
70	522-6275	S-275SS NYLON PISTON CUP	15.00	95	711-0050	RELIEF VALVE	12.30



The heart of
your water system

Date:	June 1, 2006
Section: 15	Page: 6
Cancel & replace:	01-04-99

Leather cups

Part number	Model	List price	Part number	Model	List price
523-2000	Cuir 1" x 1/2"	4.90	522-0807	Cuir 1 3/4" x 5/8"	5.00
523-2005	Cuir 1 1/8" x 1/2"	4.90	522-0808	Cuir 1 7/8" x 5/8"	5.30
523-2010	Cuir 1 1/4" x 1/2"	4.90	522-2037	Cuir 1 15/16" x 5/8"	6.00
523-2015	Cuir 1 1/4" x 1/4"	4.90	515-0501	Cuir 2" x 1 1/4"	7.30
522-0811	Cuir 1 1/4" x 5/8"	3.70	523-2040	Cuir 2 1/2" x 5/8"	7.50
523-2020	Cuir 1 3/8" x 1/4"	3.70	523-2045	Cuir 3" x 5/8"	7.70
523-2025	Cuir 1 3/8" x 1/2"	3.70	522-0700	Cuir 3" x 2"	7.00
522-0806	Cuir 1 3/8" x 5/8"	3.60	523-2050	Cuir 3 1/2" x 2 1/2"	9.50
523-2030	Cuir 1 1/2" x 1/2"	4.00	523-2055	Cuir 4" x 2 1/2"	15.50
523-2035	Cuir 1 1/2" x 5/8"	4.00	523-2060	Cuir 4" x 1"	16.00
522-0810	Cuir 1 5/8" x 5/8"	4.10	523-2065	Cuir 6" x 1"	62.00

Packings

Part number	Model	List price	Part number	Model	List price
522-3503	11/16" x 5/16" x 1/4" (Southern / Pompco)	0.60	523-0275	13/16" x 7/16" x 3/16"	1.20
523-0200	9/16" x 5/16" x 1/4" (Duro / Homart)	0.70	523-0300	3/4" x 3/8" x 3/16"	1.20
523-0250	3/4" x 5/16" x 1/4" (GSW / Beatty / McDougall)	1.00			

Springs

Part number	Model	List price	Part number	Model	List price
522-4201	Ressort #26 (Pompco / Beatty / Duro / Southern)	0.70	523-0410	Ressort #22 (Homart)	1.40
523-0400	Ressort #21 (GSW)	1.00	523-0420	Ressort #25 (McDougall)	1.00

Brass cylinders

Part number	Model	List price	Part number	Model	List price
522-0815	Pompco S-275 / Southern S-250 cylinder	14.60	523-0163	Duro E-720 / E-360 cylinder	50.00
522-0816	Pompco S-450 cylinder	32.00	523-0165	Southern S-450 cylinder	65.00
522-0817	Pompco S-600 cylinder	18.00	523-0166	Southern S-575 cylinder	65.00
523-0160	Duro K-255 cylinder	15.00	523-0170	GSW 1 1/4" cylinder	26.00
523-0161	Duro E-500 / E-250 cylinder	20.10	523-0171	GSW 1 1/2" cylinder	40.00
523-0162	Duro K-365 cylinder	45.00			

Piston rods

Part number	Model	List price	Part number	Model	List price
522-3990	Southern 8"	7.50	523-0600	Duro	11.70
522-4000	Pompco/Southern 7 1/4"	7.00	523-0700	GSW / Beatty 8 1/4"	13.70